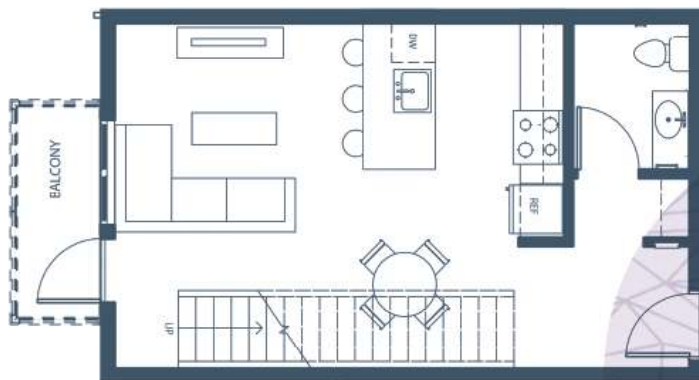
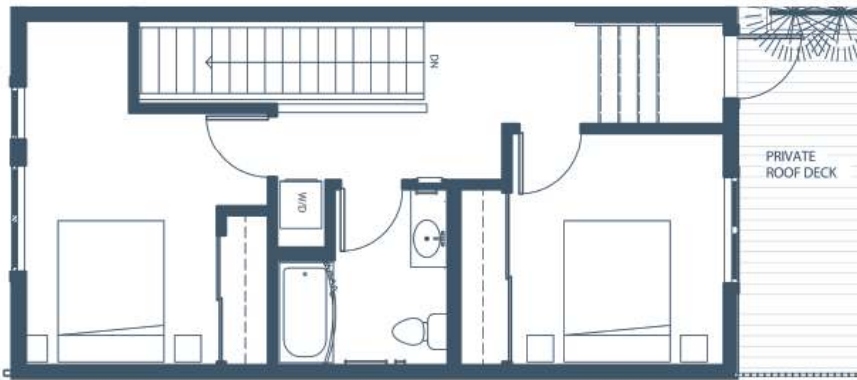


# B12 2 BR Townhouse | 2 Bath | 1,083 ft<sup>2</sup>



APARTMENT # .....

DEPOSIT .....

RENT .....

OTHER .....

MOVE-IN DATE .....

Floor plans are not to scale; square footage is approximate.

# Attwell

OFF MAIN

STAY IN TOUCH:

AttwellOffMain

12850 SW Ash Street  
Tigard, Oregon 9722

PHONE: 503-620-9366

[www.AttwellOffMain.com](http://www.AttwellOffMain.com)