

✦ PRIVATE PLACES ✦

1-, 2- and 3-Bedroom Apartment Homes

Individual Washer & Dryer

Gourmet-Inspired Kitchens with:

- Sleek Stainless Steel or Clean White Appliances
- Granite Countertops Available
 - Subway Tile or Stone Accent Backsplashes
- Sleek White Custom Kitchen Cabinetry with Brushed Nickel Hardware
- Dishwasher • Microwave • Disposal
 - Modern Single-Handle Pullout Kitchen Faucets

Warm-Toned, Wood-Style Flooring or Plush Carpeting

Designer Lighting and Two-Toned Paint

Large Closets and Abundant Storage

✦ SOCIAL SPACES ✦

Garage Parking or Carports Available

The Lounge : A spacious gathering room for entertaining with multiple flat screens

Fitness Center with Club-Quality Equipment

Wireless Access in all Social Zones

Business Center and Cyber Café with all the Connections

Indoor and Outdoor Swimming Pools with Sun Deck

Relaxing Spa

Lush Outdoor Social Area with Barbeques and Playground

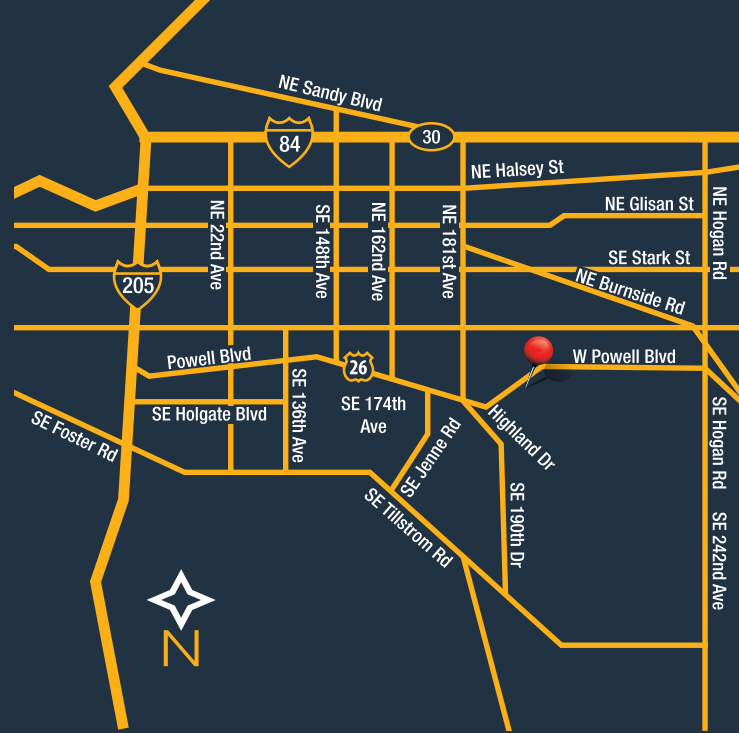
Bicycle Maintenance Room

Dog- and Cat-Friendly Amenities include a Paw Spa Dog Washing Area and Bark Park

Minutes to Quaint, Historic Downtown Gresham

Easy Access to the Max Light Rail Station and Interstates 84 and 205

Complete Online Leasing, Payment, and Service Requests



LUMINA APARTMENTS

2700 West Powell Boulevard
Gresham, Oregon 97030
TEL 503-666-2500

www.LuminaApartments.com
Lumina@GrandPeaks.com



Our **EXPECTATION** is not to be the largest property management company but the best. Being the best requires more than a promise... it requires a commitment. We are committed to delivering the highest quality and value, and maintaining a superior standard of service for our residents, our investors, and our associates. These are our **GRAND EXPECTATIONS**. Our people, our management style and our company culture make us a premier management company.

MODERN

CONNECTED

LUMINA APARTMENTS

SOCIAL

CONVENIENT

STYLISH

With **LUMINA APARTMENTS** on the scene, it's fair to say that swank, urban living has made its way to Gresham. Those of you who know Latin recognize immediately that the word lumina quite literally means bright light. And we like the inspiration inherent in that word: moving to Lumina Apartments represents a new light on apartment living.

It's hard to imagine a better location, seriously—right down the road from the revitalize old downtown Gresham. The location provides you with a seemingly endless list of things to do, things to eat, and shops to peruse—right outside your door.

The apartments are exquisitely modern with wood plank-style flooring, custom cabinets, available granite countertops, sleek stainless steel or clean white appliances, and modern fixtures with clean, simple lines. The look is classic, elegant and yet undeniably casual—this is a place where you can hang out for a while.

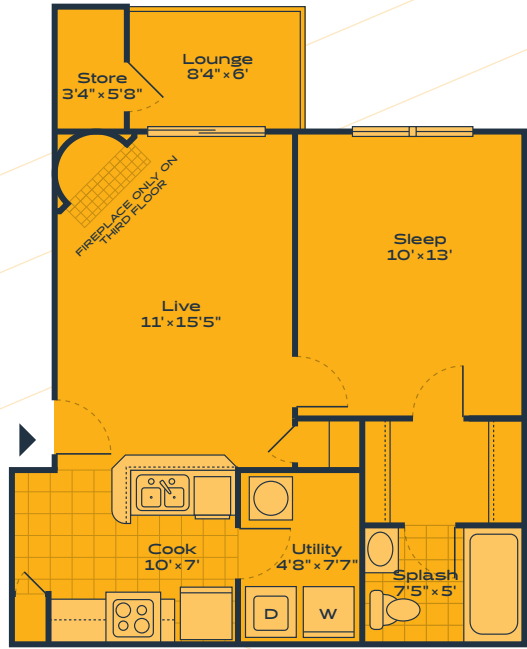
In terms of amenities, we're at the top of the market. We've amplified everything: one of the largest fitness centers, indoor and outdoor swimming pools, resident lounge, Grand Café, Mac stations, Paw Spa pet wash and Bark Park for pets, bicycle repair room, and more. Of course everything is the latest and greatest in terms of perks and technology. And our team is trained to deliver a level of service typically reserved for fine hotels—hope you're ready for a five-star experience.

Living at Lumina means easier access to the things that matter. Like your morning coffee. A quick grocery run. A delicious bite to eat. An adventurous bike ride.

**When you live at LUMINA,
your future is bright.**

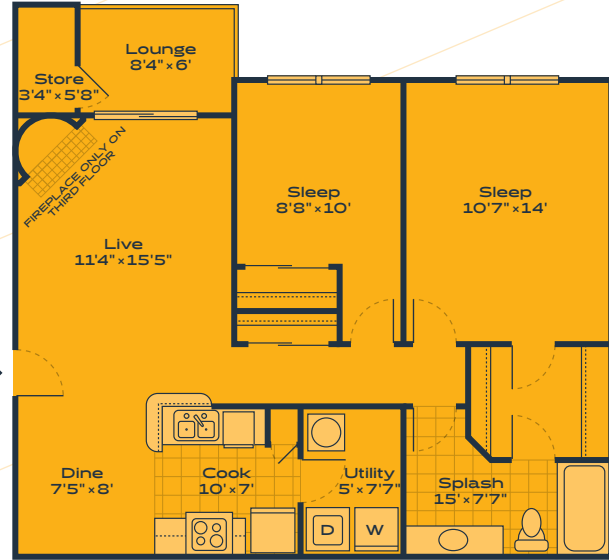
POLARIS

One Bed + One Bath
566 FT²



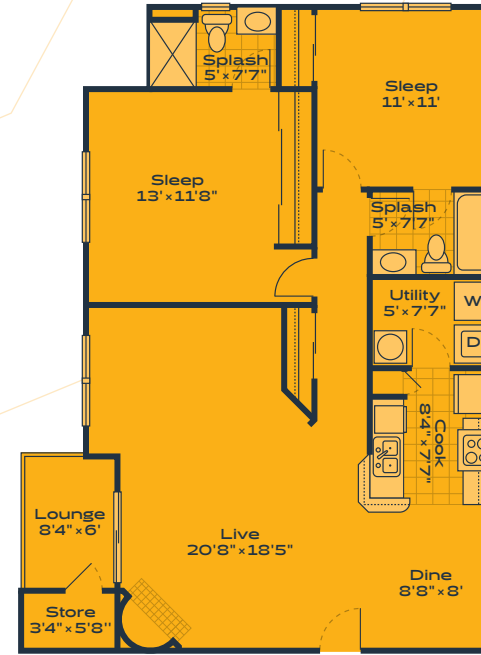
CANOPUS

Two Bed + One Bath
828-835 FT²



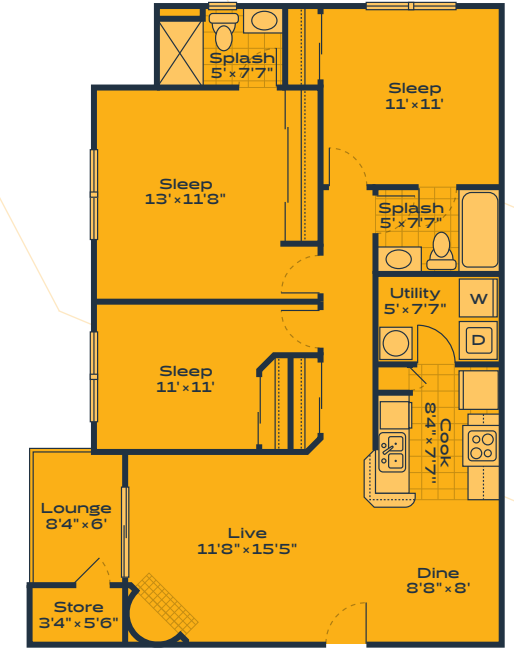
VEGA

Two Bed + Two Bath
1,019 FT²



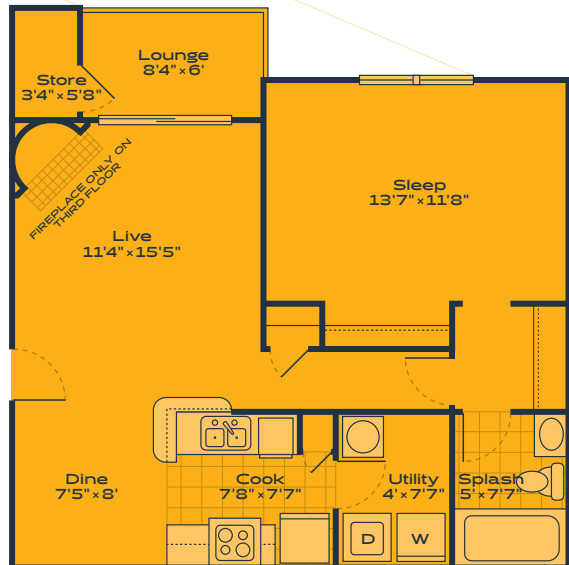
CASTOR

Three Bed + Two Bath
1,019 FT²



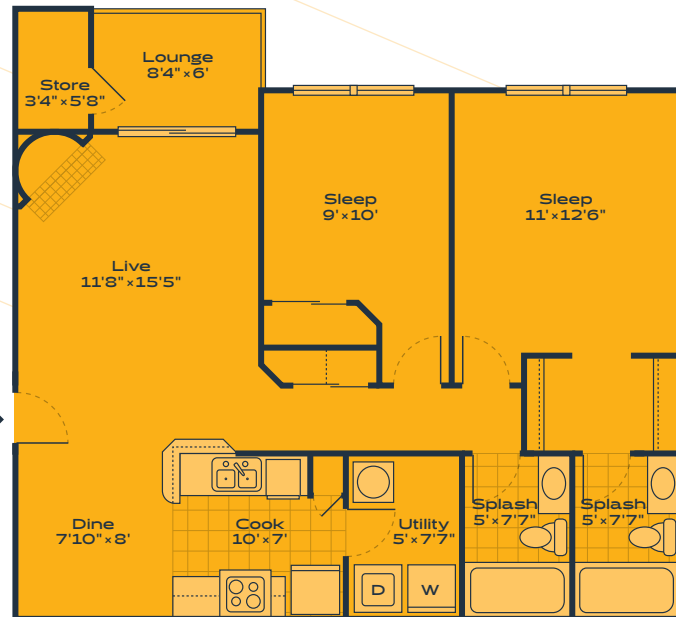
ALTAIR

One Bed + One Bath
672 FT²



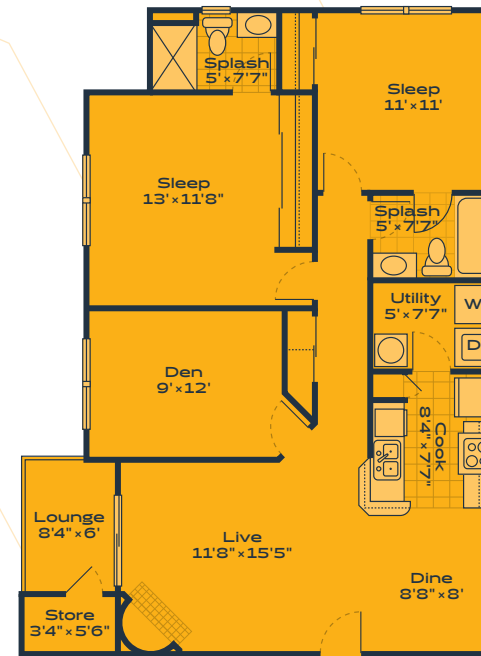
SIRIUS

Two Bed + Two Bath
854 FT²



CAPELLA

Two Bed + Two Bath + Den
1,019 FT²



LUMINA APARTMENTS

Apartment Style _____

Monthly Rent _____

Apartment Deposit _____

Other _____

Move-In Date _____

Floor plans are not to scale; square feet and dimensions are approximate.